

THE PLATES



Pl. 1 St Oswald's Church south side, looking north-west



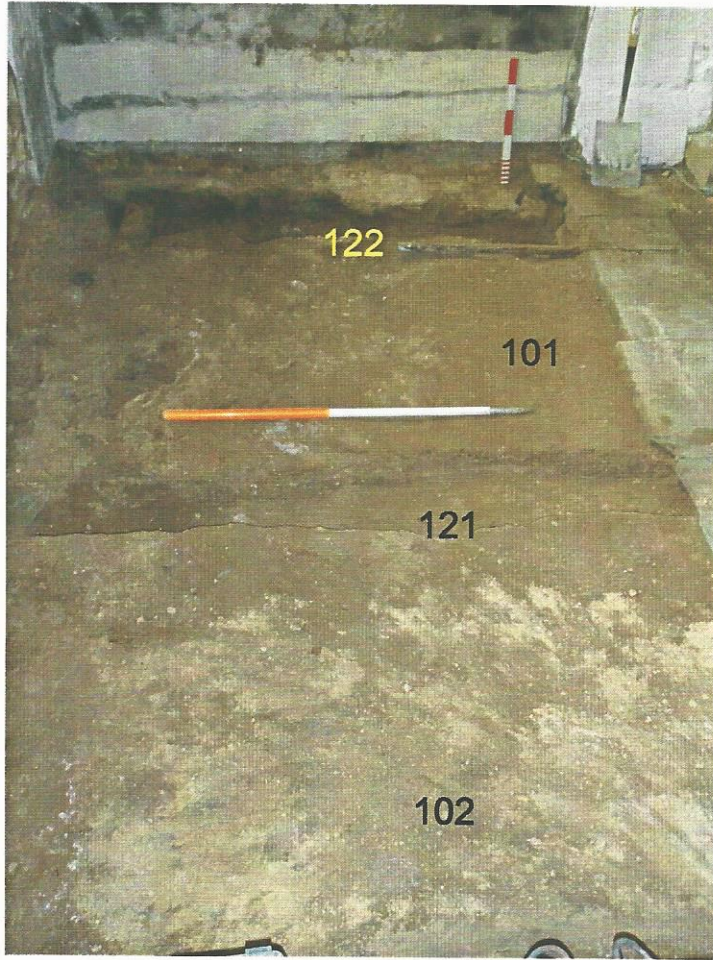
Pl. 2 St Oswald's Church north side, looking south-west



Pl. 3 The Crowle Stone in the north-west corner of the nave, prior to its removal, looking south-west



Pl. 4 The south-west corner of the nave, prior to cleaning, showing the font prior to its relocation, looking south-west. Scales 1m and 0.50m



Pl. 5 Nave, south-west corner, general view west. Scales 1m and 0.50m



Pl. 6 General view looking south. Scale 1m



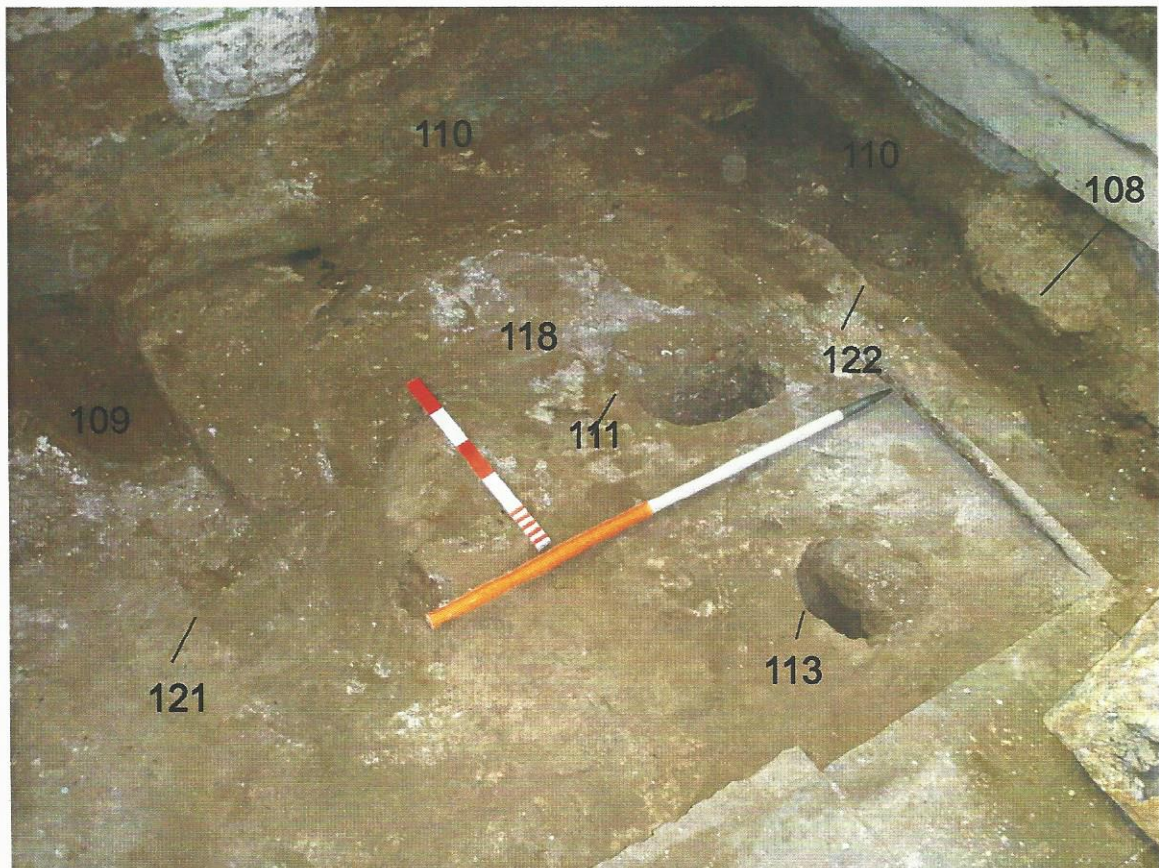
Pl. 7 General view looking west. Scale 1m



Pl. 8 Posthole 113, part excavated, looking west. Scale 0.30m



Pl. 9 Posthole 111, part excavated, looking west. Scales 0.50m and 0.30m



Pl. 10 General view looking south-west



Pl. 11 General view of north-west corner of the nave after cleaning showing the nave north wall beneath the aisle arcade and the Crowle Stone, looking north-west



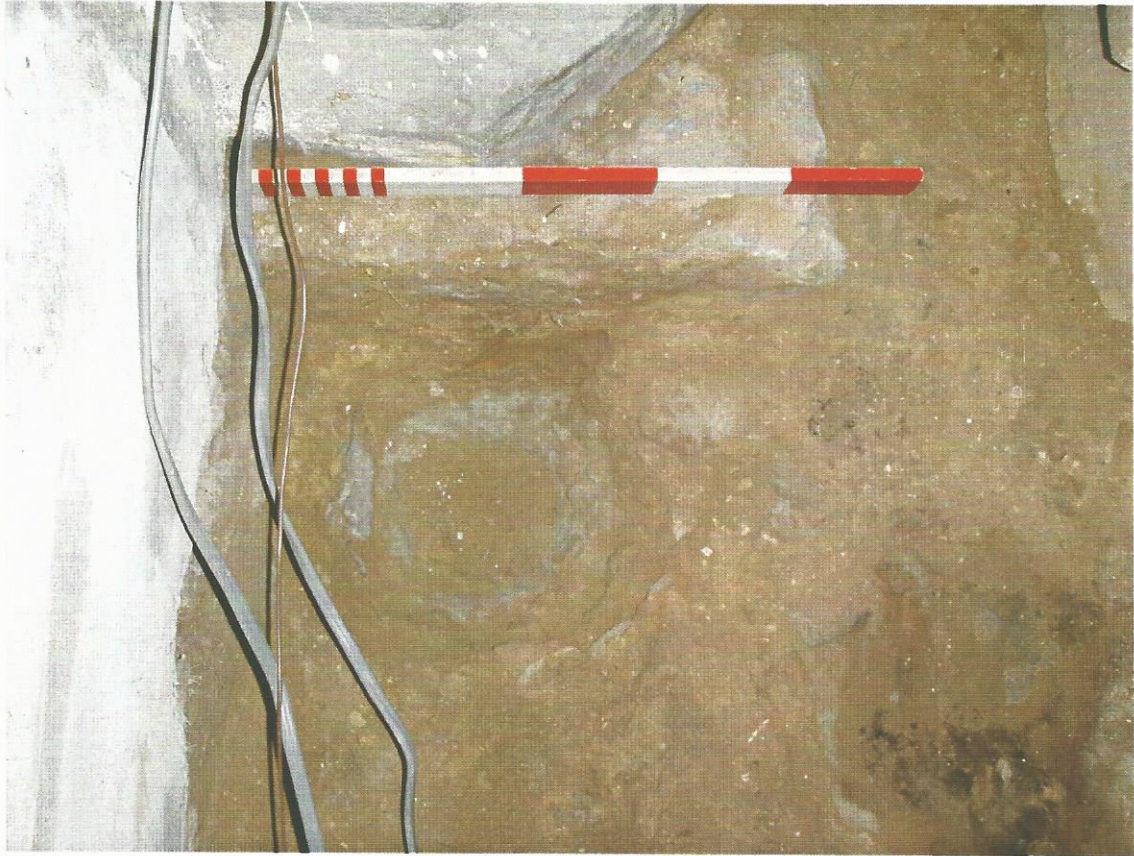
Pl. 12 Mortar floor surface, overlying demolished wall 201, looking north. Scale 1m



Pl. 13 Damaged area of wall 201 for pew support, looking east. Scales 1m and 0.50m



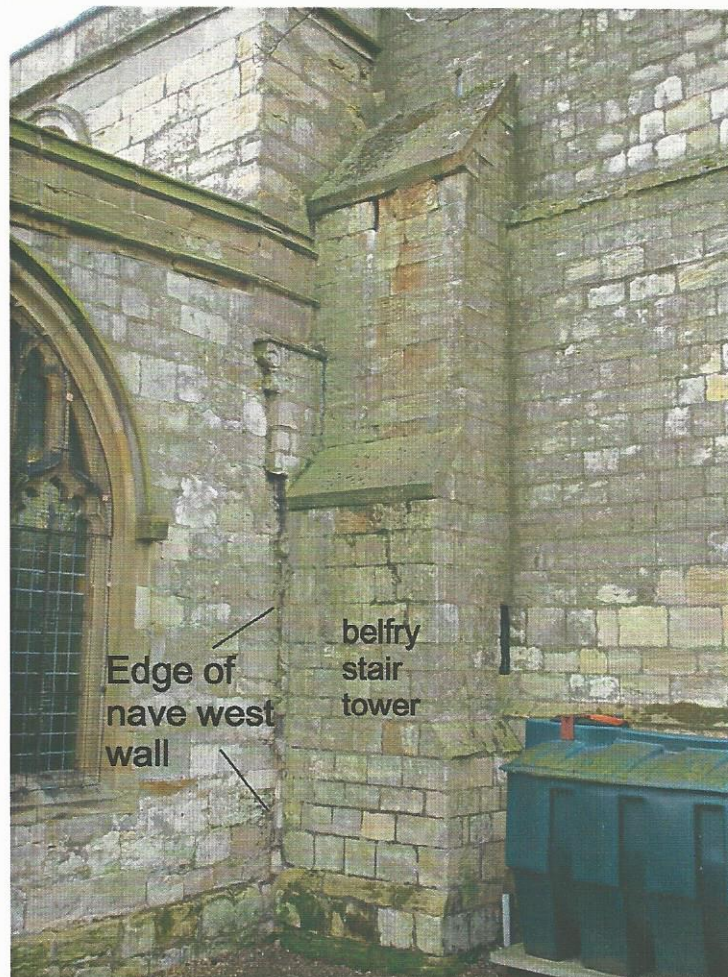
Pl. 14 Damaged area of wall 201 for pew support, with posthole 228 beneath, looking south. Scale 1m



Pl. 15 Posthole 222, looking north. Scale 0.50m



Pl. 16 Nave west wall showing wall scar for original position of the nave north wall



Pl. 17 Corner of the nave west wall visible in the north aisle west wall



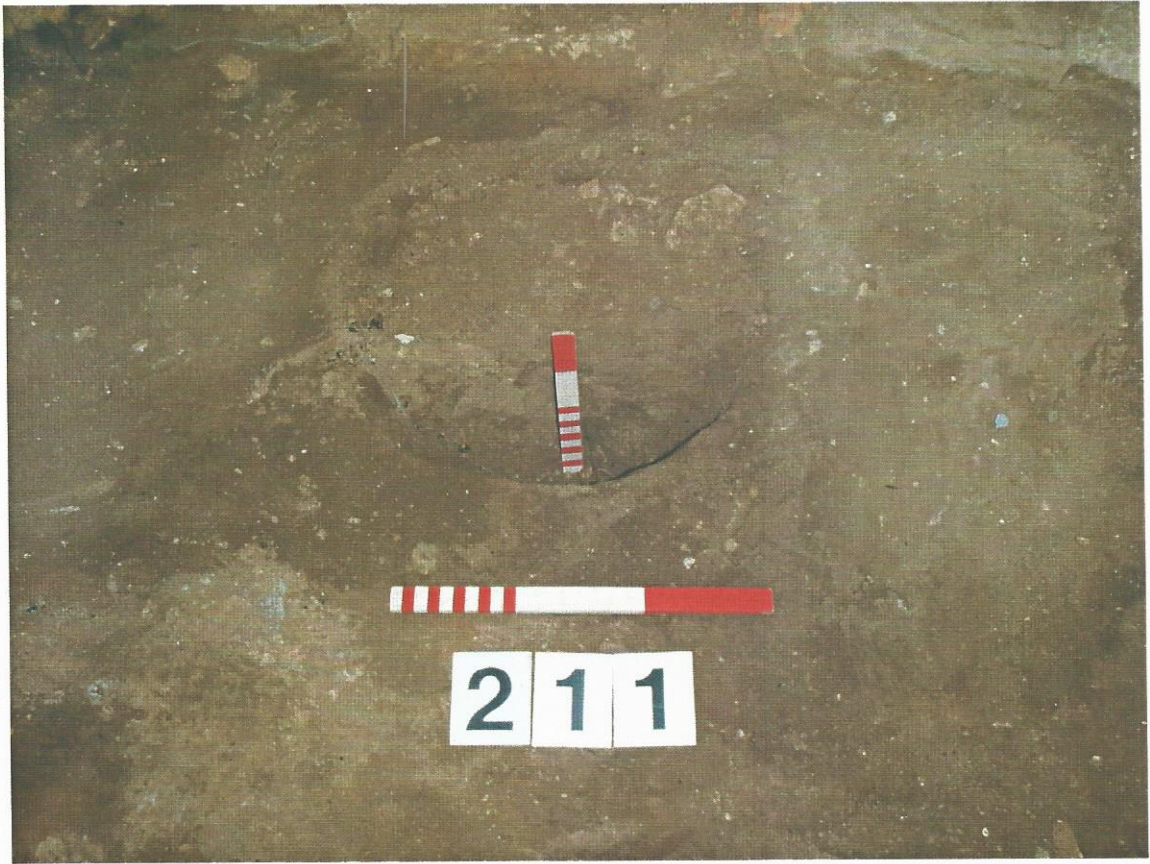
Pl. 18 Mortar patch 206, looking south. Scale 1m



Pl. 19 Posthole 207, part excavated, looking west. Scales 0.30m and 0.50m



Pl. 20 Posthole 209, part excavated, looking west. Scales 0.30m and 0.50m



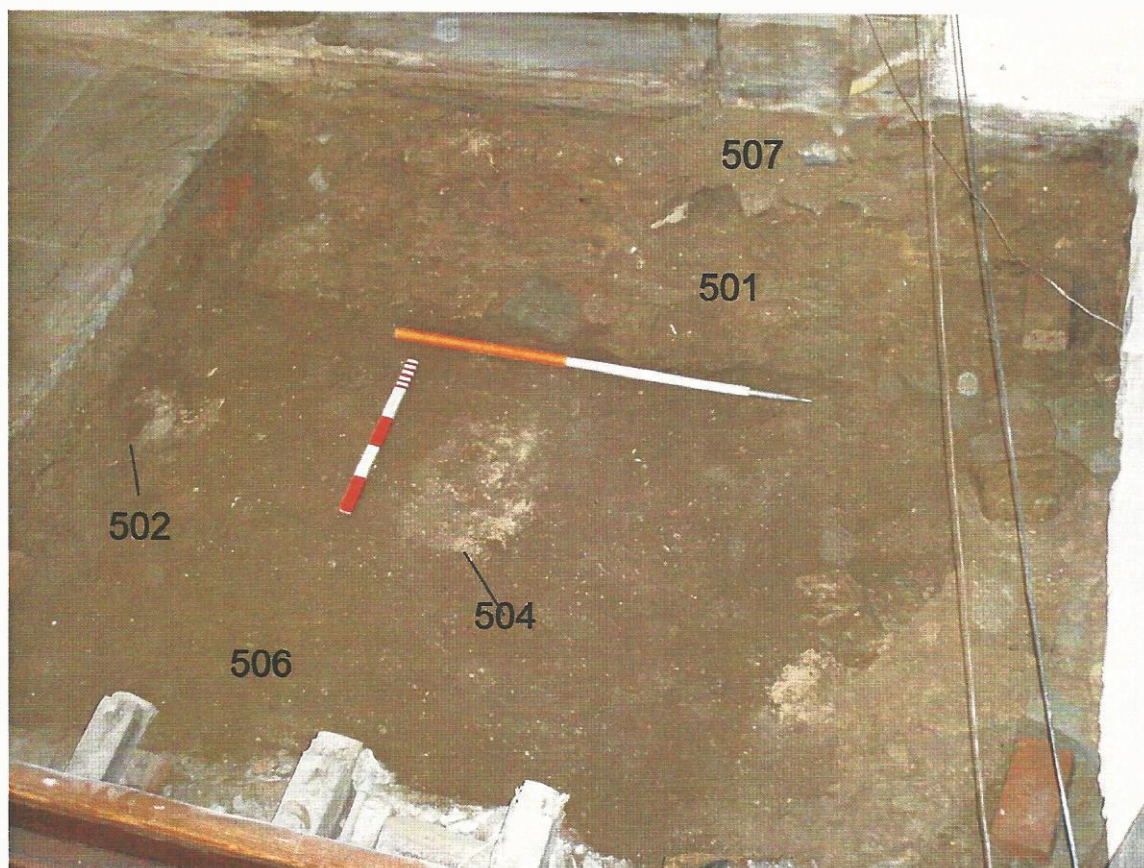
Pl. 21 Posthole 211, part excavated. Scales 0.30m



Pl. 22 Posthole 218. Scales 0.30m and 0.50m



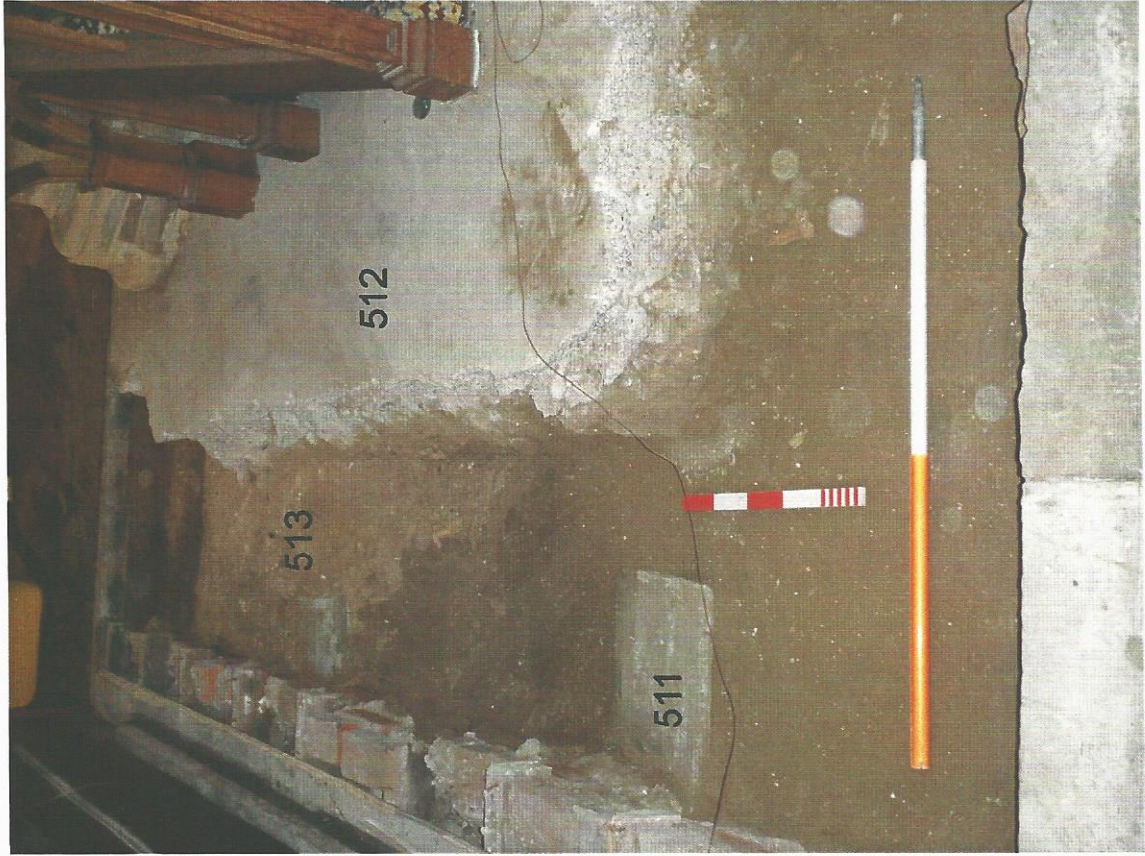
Pl. 23 South-east corner of the nave, looking south. Scales 1m and 0.50m



Pl. 24 South-east corner of the nave, looking east. Scales 1m and 0.50m



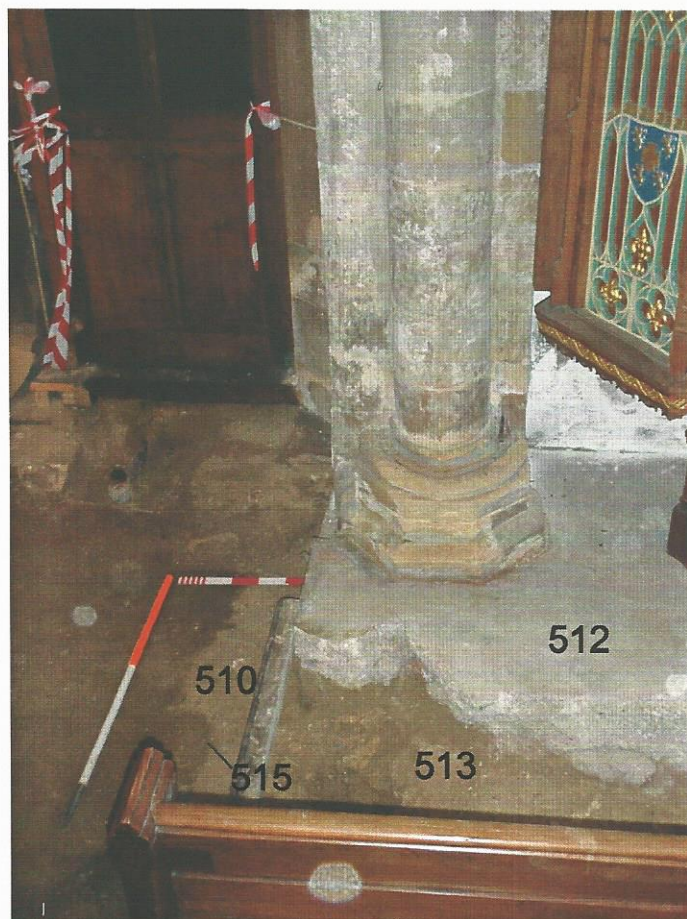
Pl. 26 North-east corner of the nave, looking east.
Scales 1m and 0.50m



Pl. 25 North-east corner of the nave, looking north.
Scales 1m and 0.50m



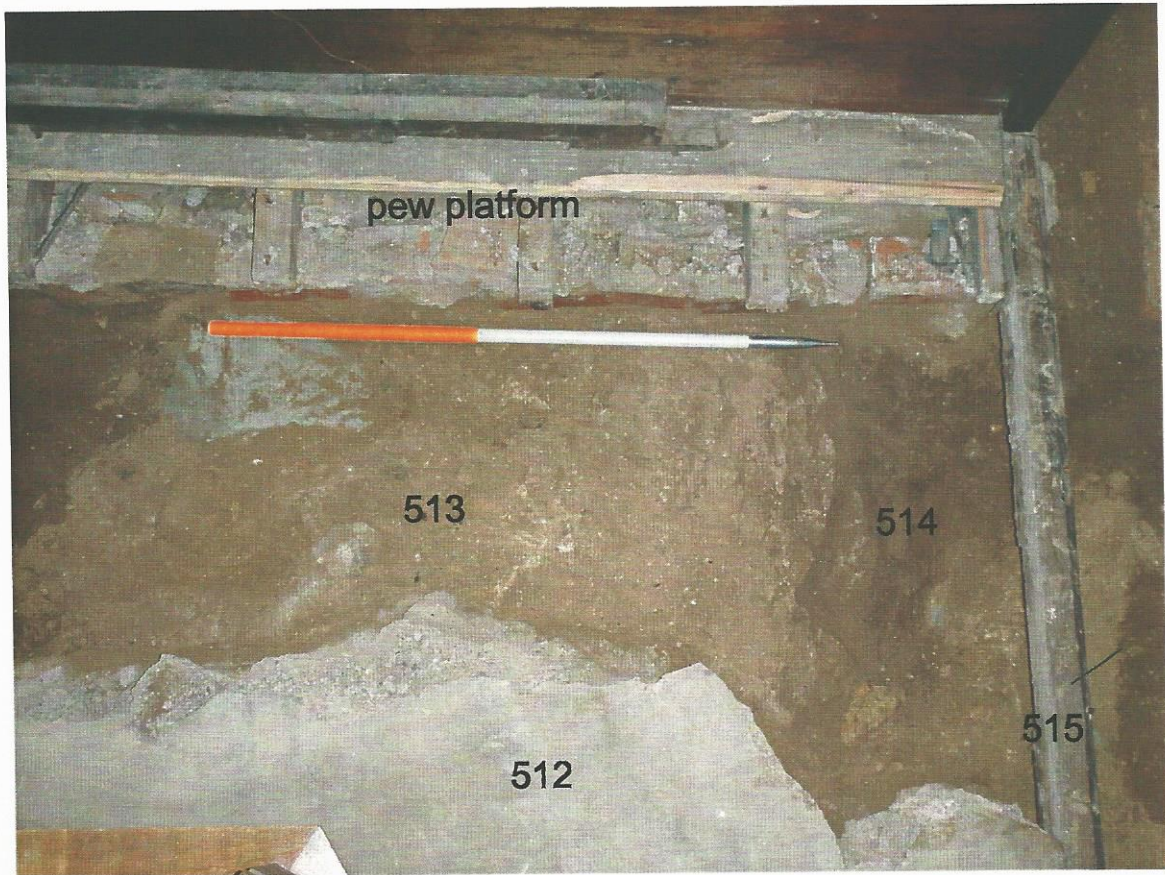
Pl. 27 Grave slab 5611, looking east. Scale 0.50m



Pl. 28 The nave north wall running beneath the aisle respond, looking east.
Scales 1m and 0.50m



Pl. 29 Detail of the nave north wall, looking east. Scale 1m



Pl. 30 Detail of the nave north wall, looking west. Scale 1m



Pl. 31 North aisle after cleaning, looking east.



Pl. 32 North aisle after cleaning, looking north-west.



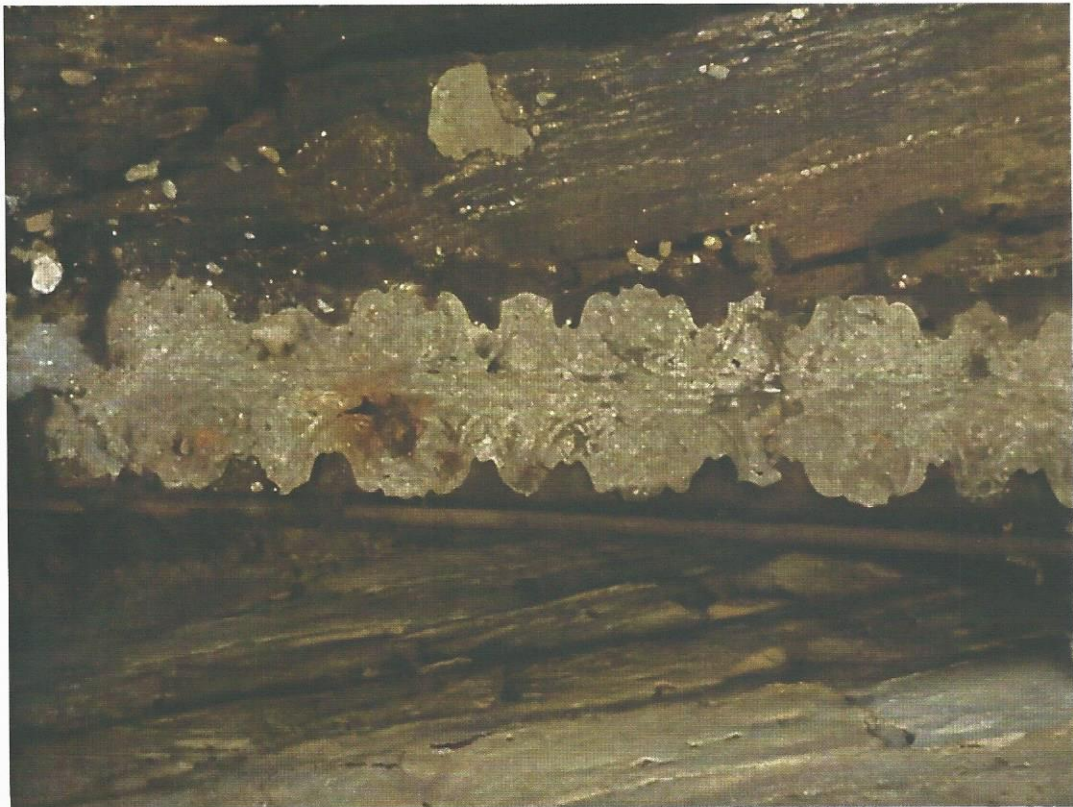
Pl. 33 Vaults 1 and 2, looking west. Scale 1m



Pl. 34 Vaults 1 and 2, looking north. Scale 1m



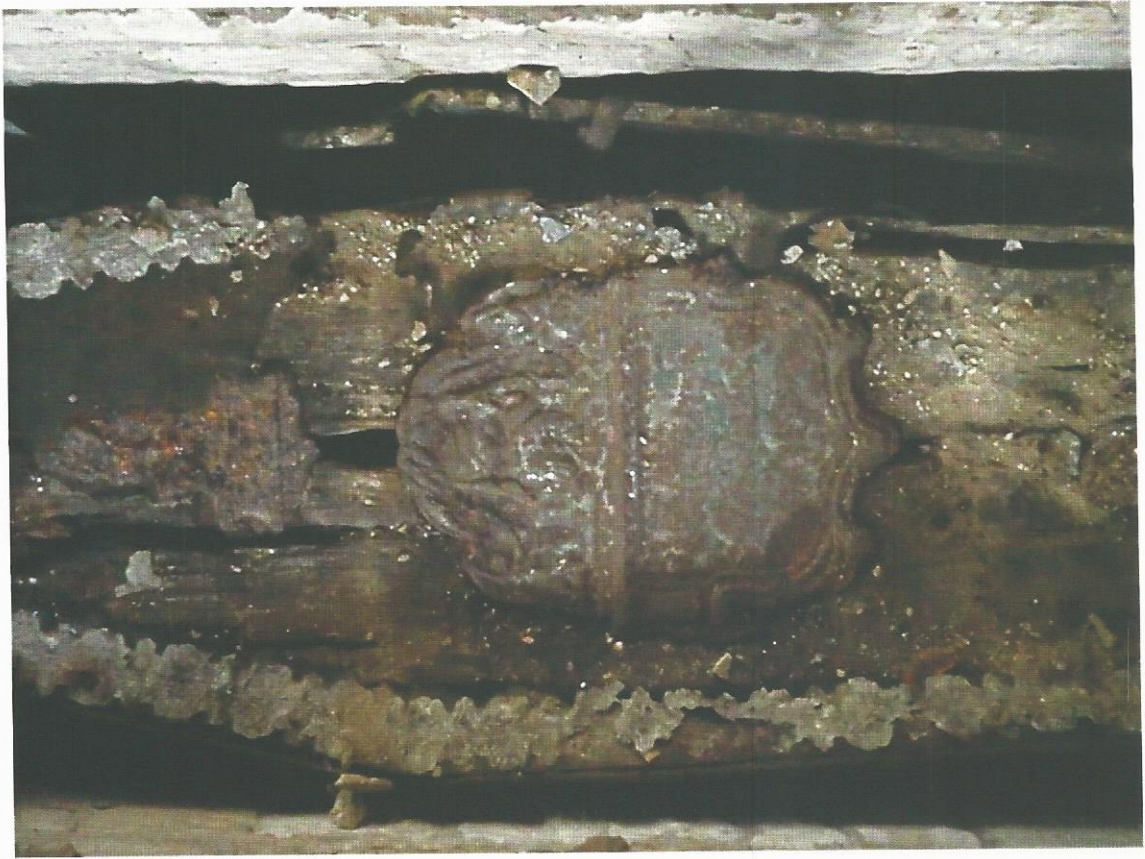
Pl.35 Coffin box 433, looking west. Scales 1m and 0.50m



Pl. 36, decorative metal strip on edge of box, detail.



Pl. 38 Plaque 1



Pl. 37 Plaques 1 and 2, looking west



Pl. 39 Plaque 2



Pl. 40 Plaque 3



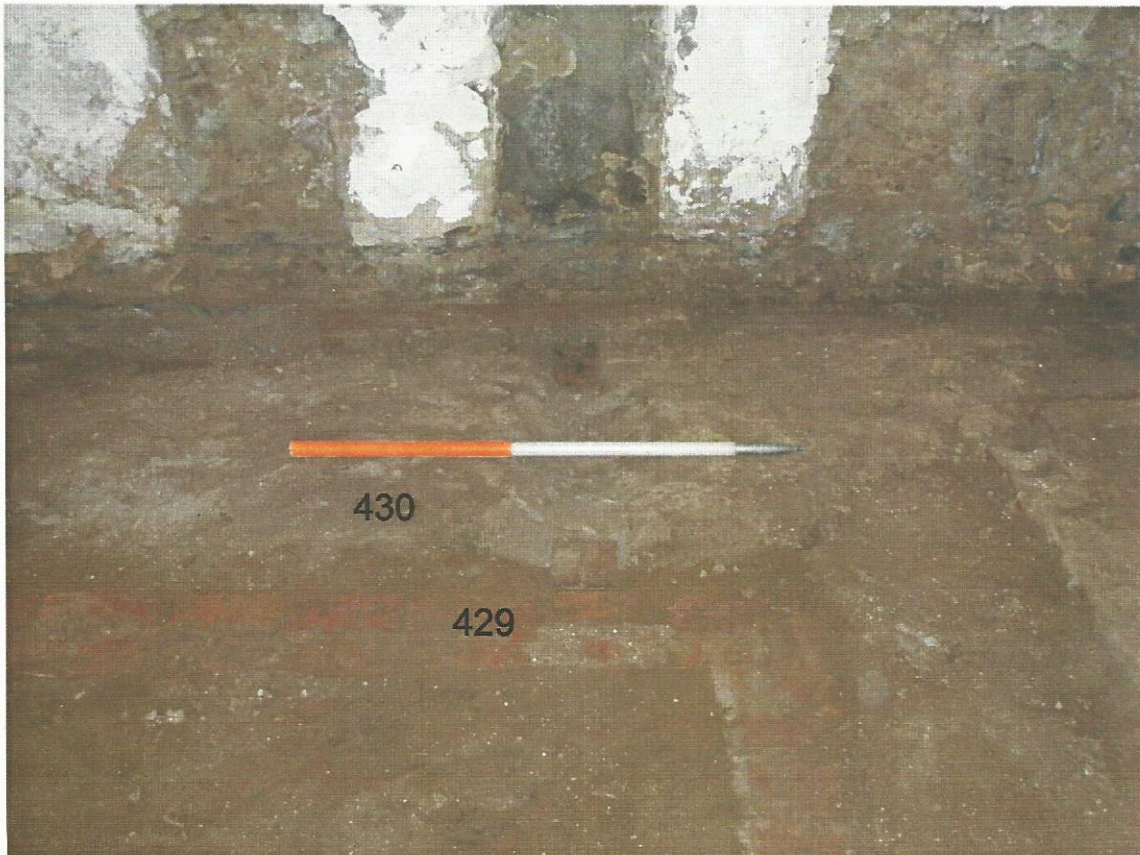
Pl. 41 Coffin handle at west end



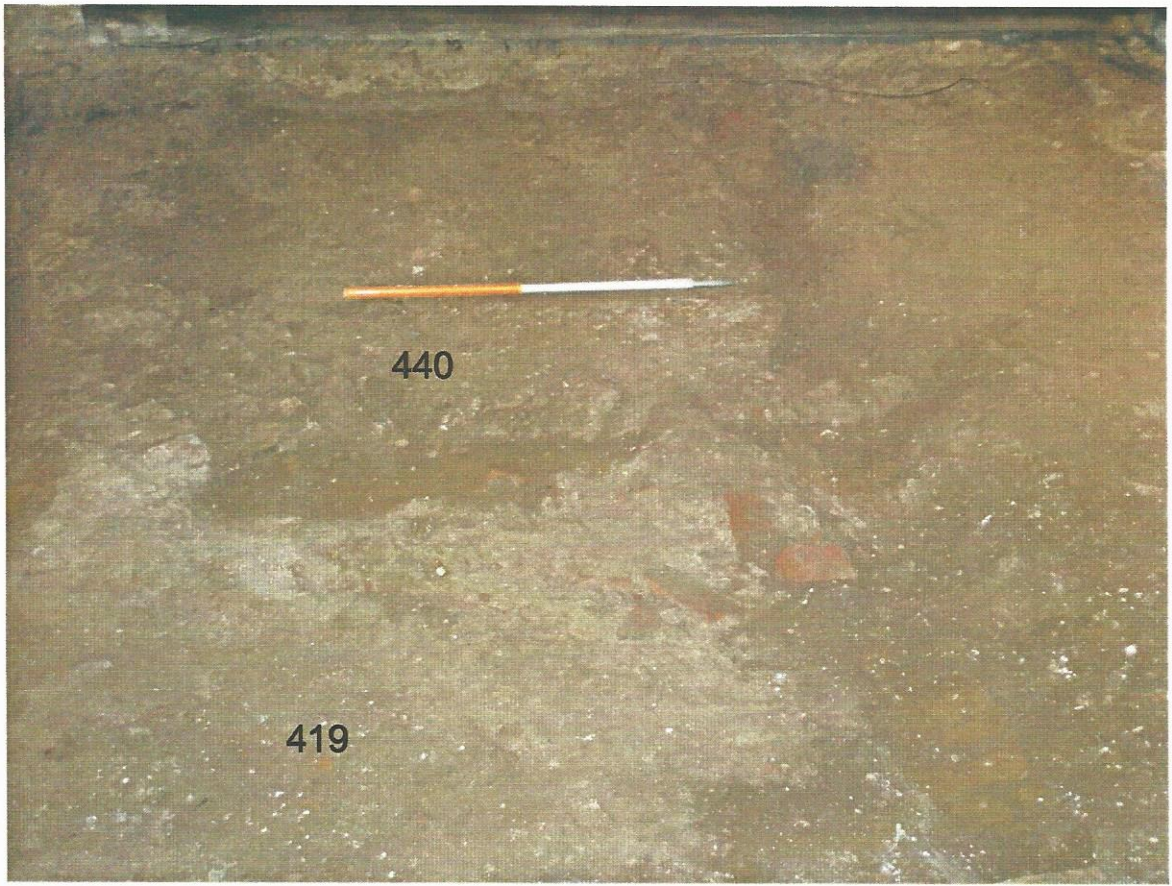
Pl. 42 Lead coffin exposed at east end, looking north-west.



Pl. 43 Vault 3 looking north. Scale 1m



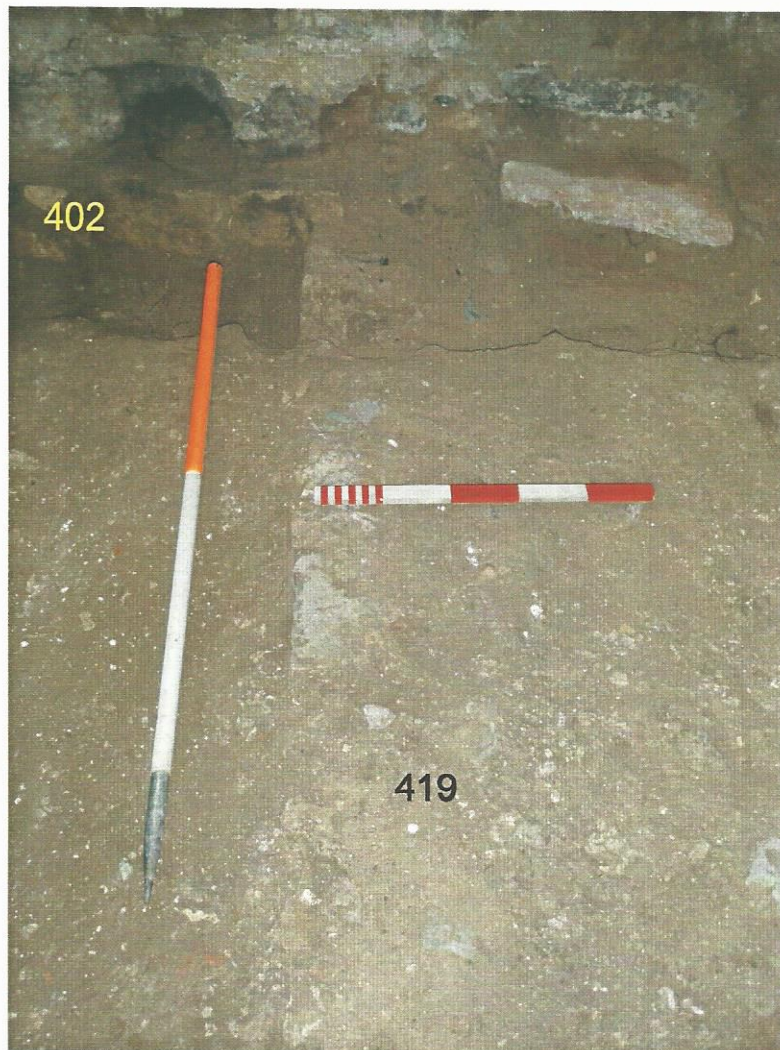
Pl. 44 Mortar floor base 430, looking north. Scale 1m



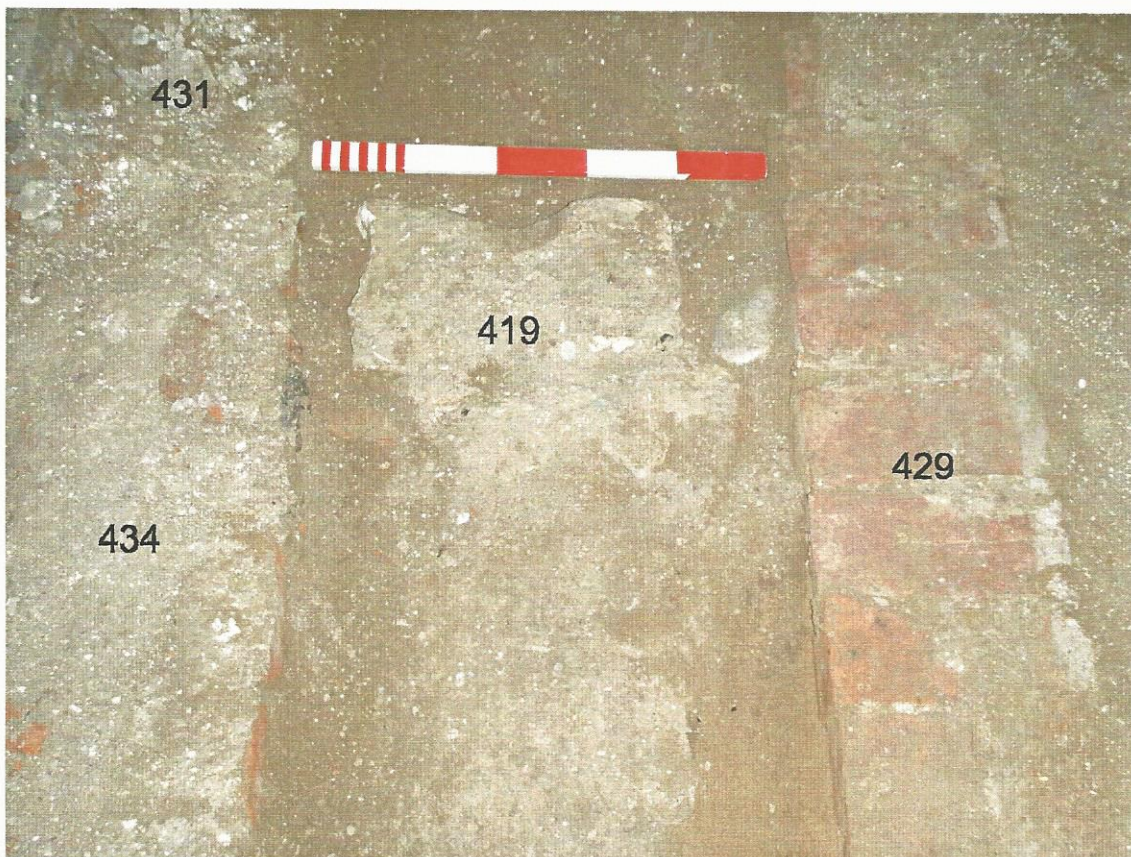
Pl. 45 Mortar floor base 440, looking north. Scale 1m



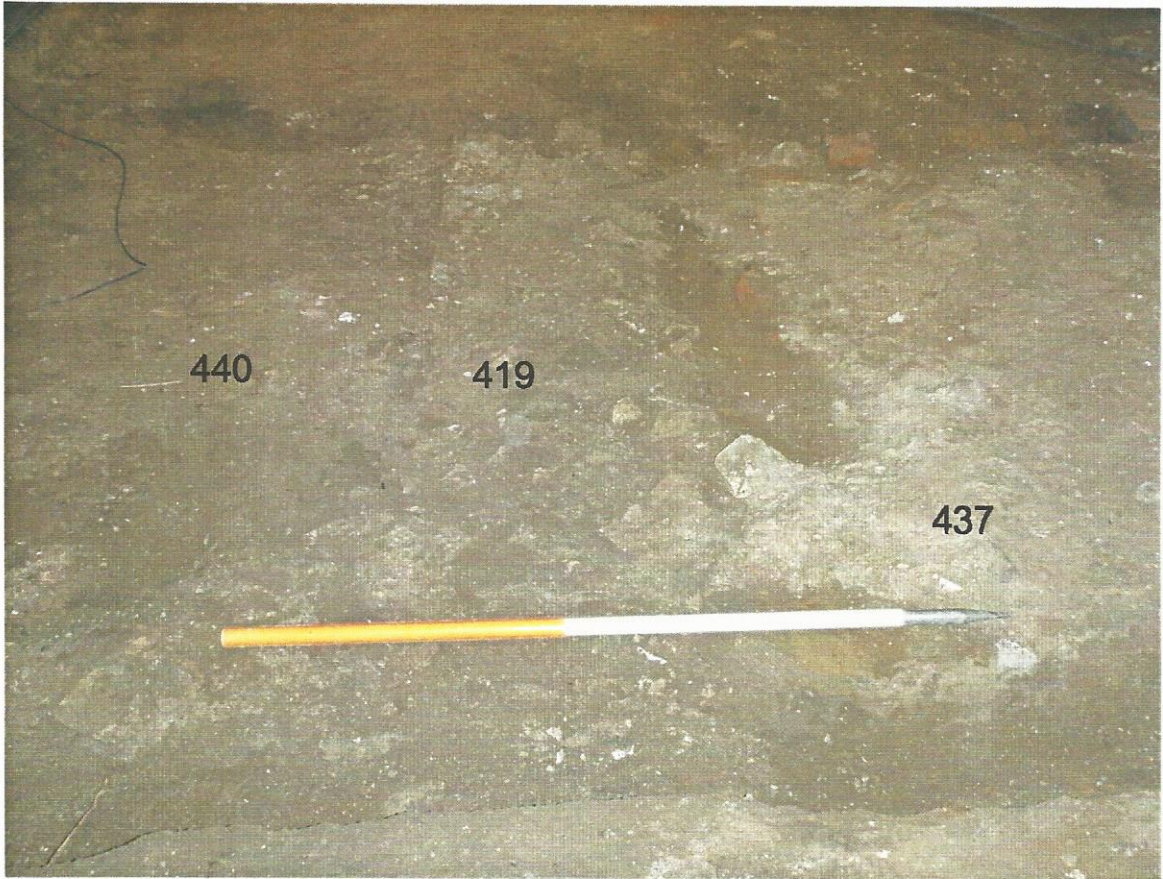
Pl. 46 Wall foundation of north wall of medieval north aisle, looking west. Scales 1m and 0.50m.



Pl. 47 Junction of north and west walls of the medieval north aisle, looking west. Scales 1m and 0.50m



Pl. 48 Remnant of wall 419 between vaults 1, 2 and 3, looking south. Scale 0.50m



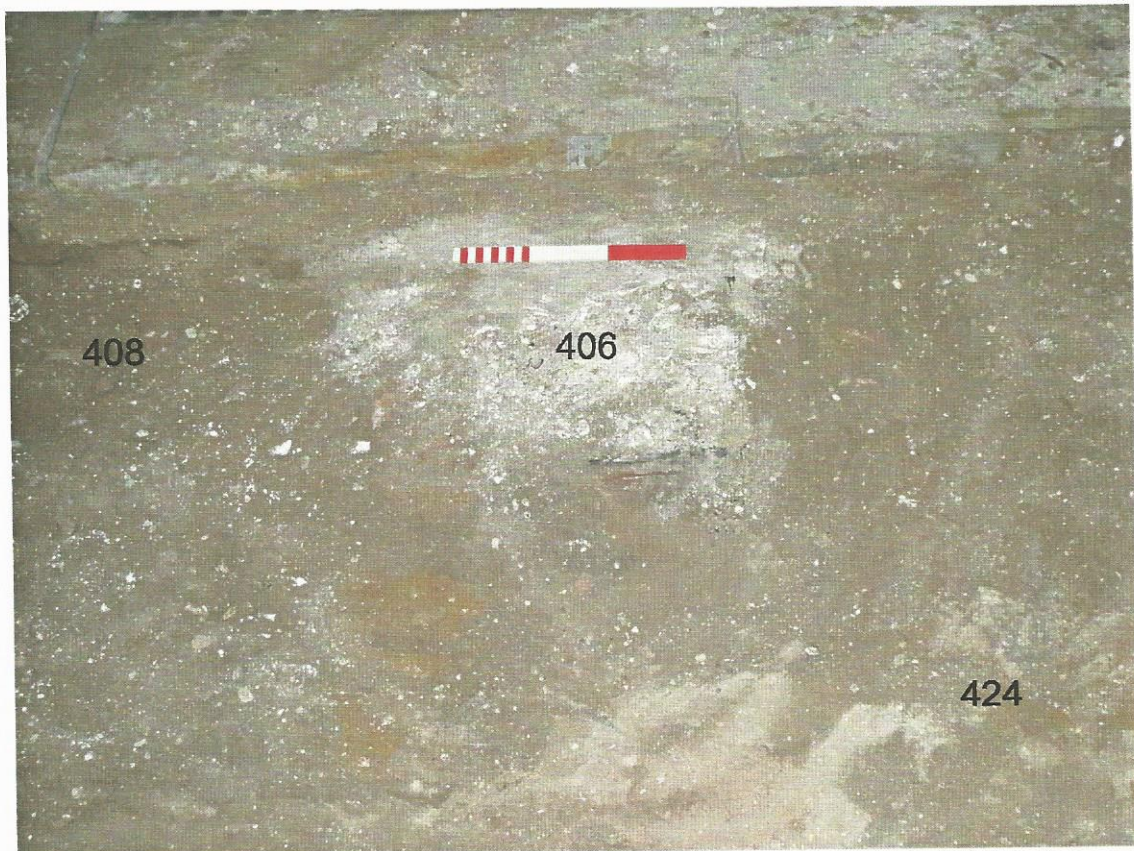
Pl. 49 Remnant of medieval aisle north wall, looking east. Scale 1m



Pl. 50 Wall 419, external chamfered plinth stones, looking south. Scale 0.50m



Pl. 51 Nave east wall, 438, looking east. Scale 1m



Pl. 52 Mortar patch 406, looking south. Scale 0.30m



Pl. 53 Tower interior before removal of the boiler, looking north-west



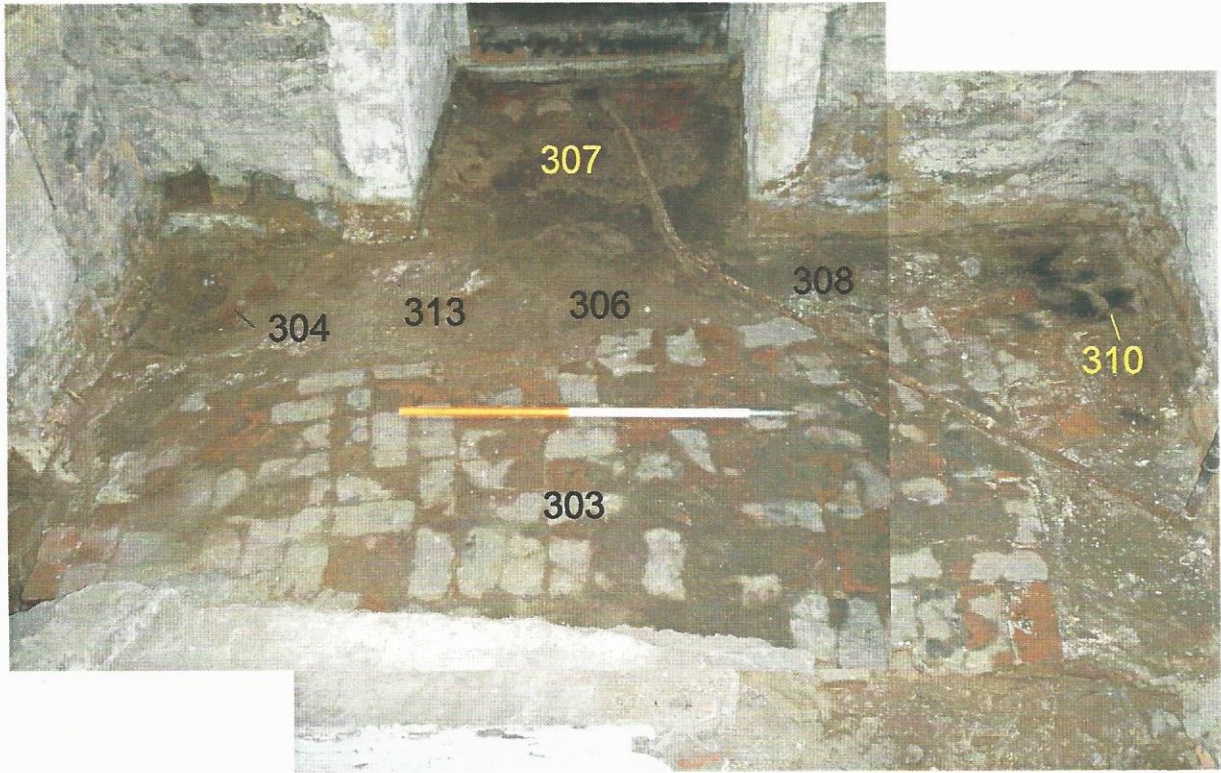
Pl. 54 Tower boiler cavity after removal of the boiler, looking north-west. Scale 1m.



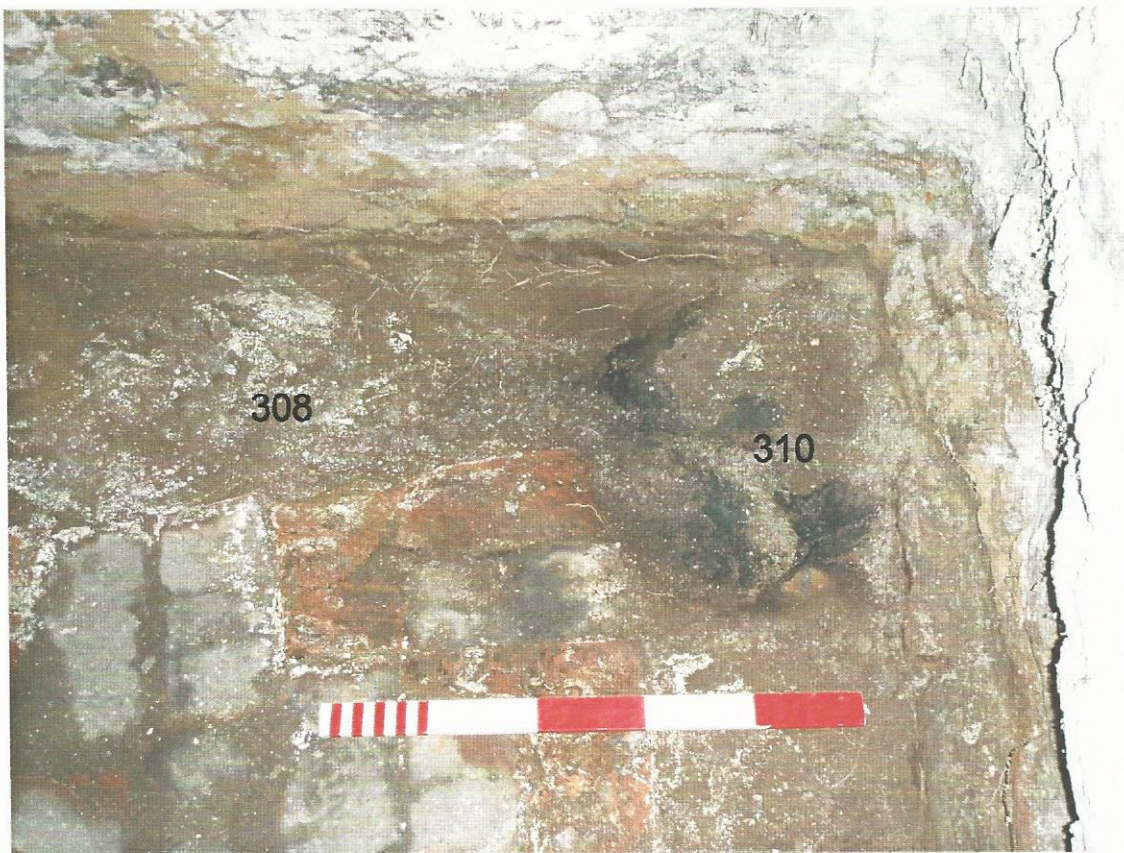
Pl. 55 Brick retaining wall, looking south-west. Scale 1m



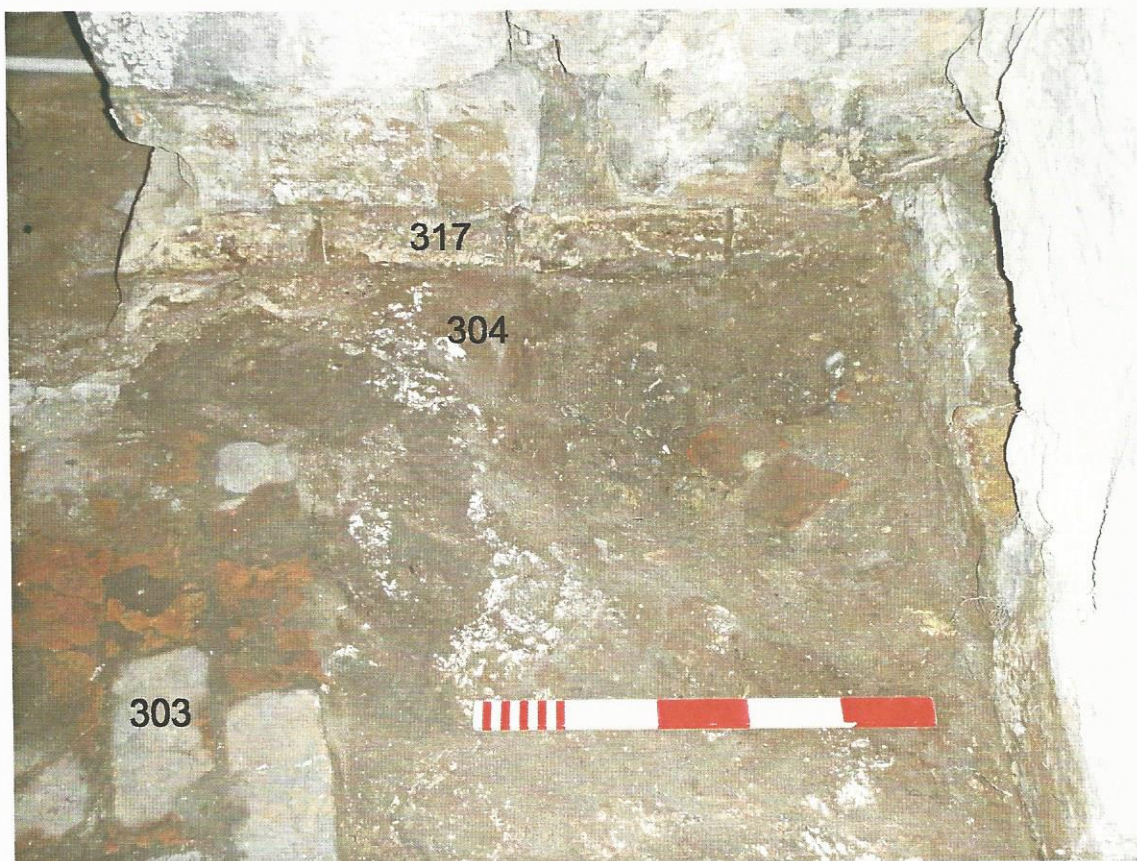
Pl. 56 Belfry door in tower north wall.



Pl. 57 General view of the tower, looking south. Scale 1m



Pl. 58 Ash and charcoal patches in the south-west corner of the tower. Scale 0.50m



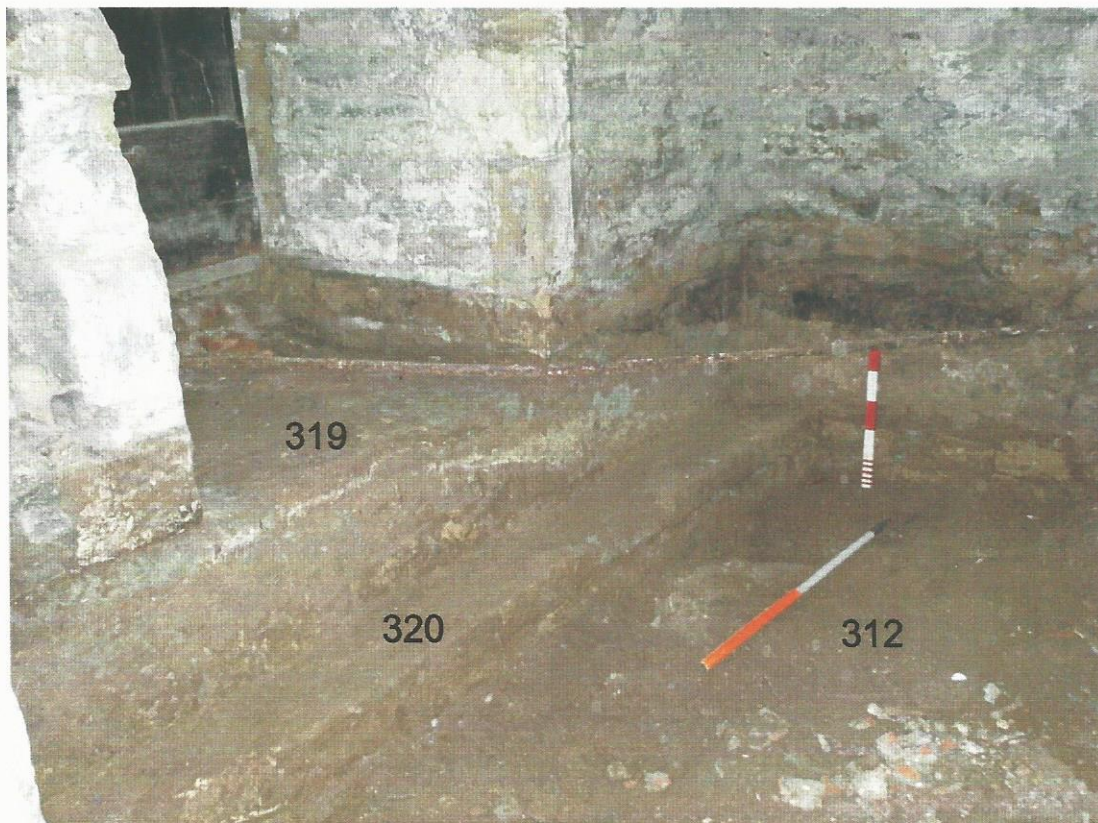
Pl. 59 Circular depression 304, marking former position of stove. Scale 0.50m



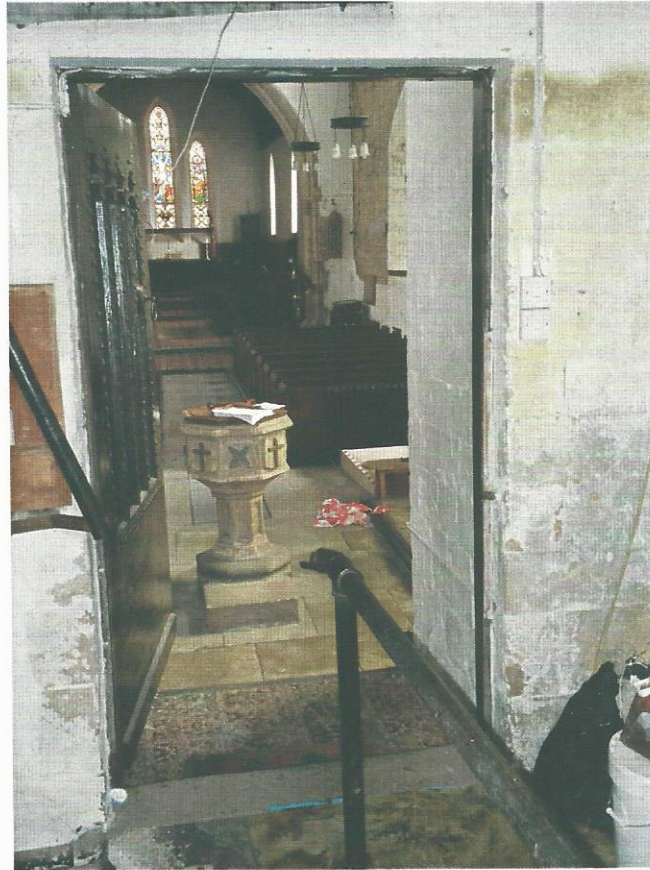
Pl. 60 Tower south door showing pink mortar surface 307



Pl. 61 Junction of the tower north wall with the earlier nave west wall, showing the contrast of ashlar blocks in the nave wall with the roughly dressed stonework of the tower wall.



Pl. 62 Tower foundations in the south and west walls, looking south-west. Scales 1m and 0.50m



Pl. 63 The tower door into the nave, prior to commencement of works, looking east



Pl. 64 Tower door threshold after removal of concrete steps, looking south-east. Scales 1 and 0.50m



Pl. 65 Detail of chamfered course south of doorway. Scale 0.50m



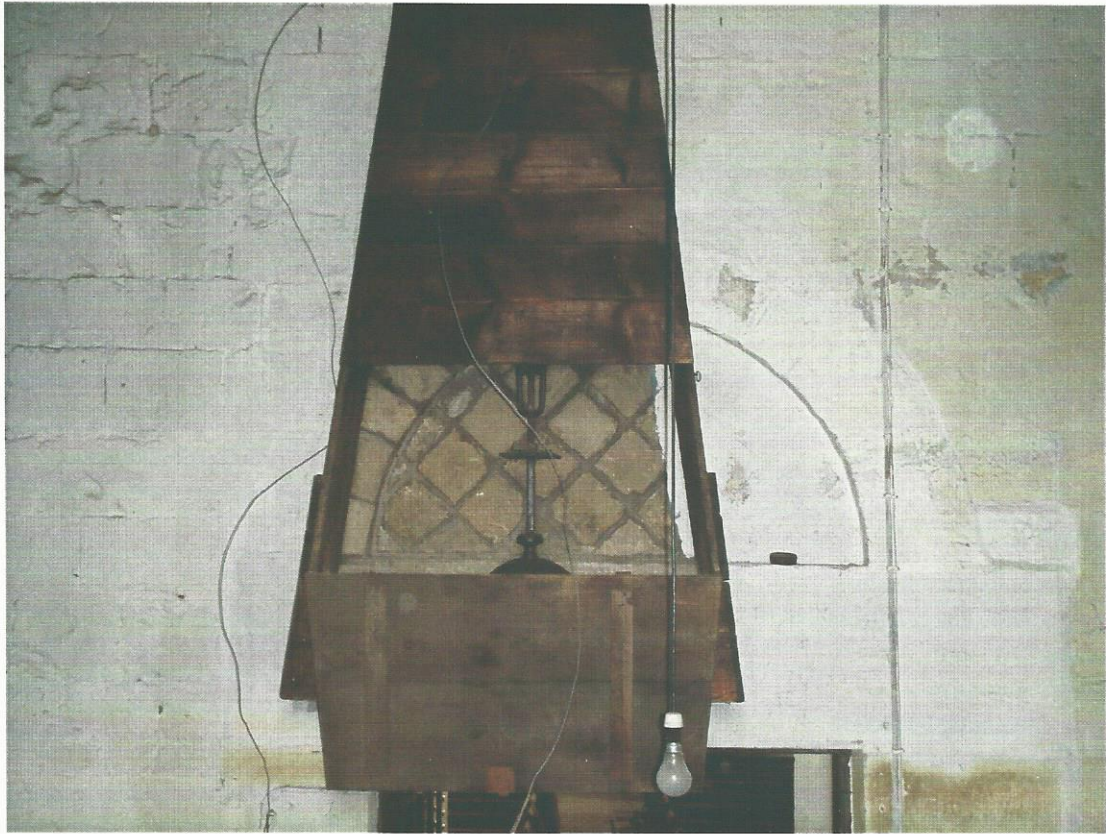
Pl. 65 Detail of chamfered course north of doorway . Scale 0.50m



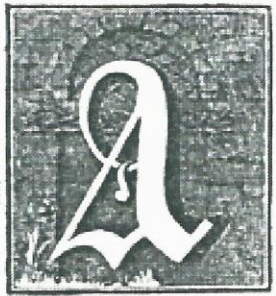
Pl. 67 Detail of north-west corner of opening showing damage caused by insertion of heating pipes, looking east. Scale 0.50m



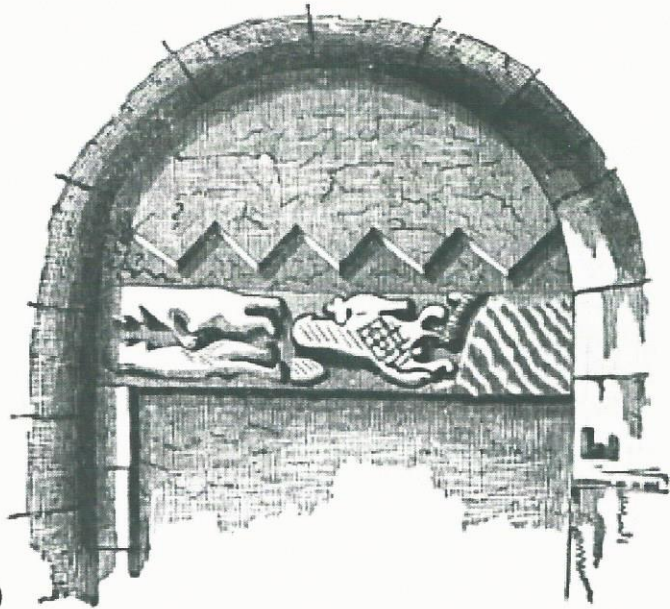
Pl. 68 West door threshold, looking west into the tower, showing grave 320. Scale 1m.



Pl. 69 Tympanum above west door into tower, looking east



a

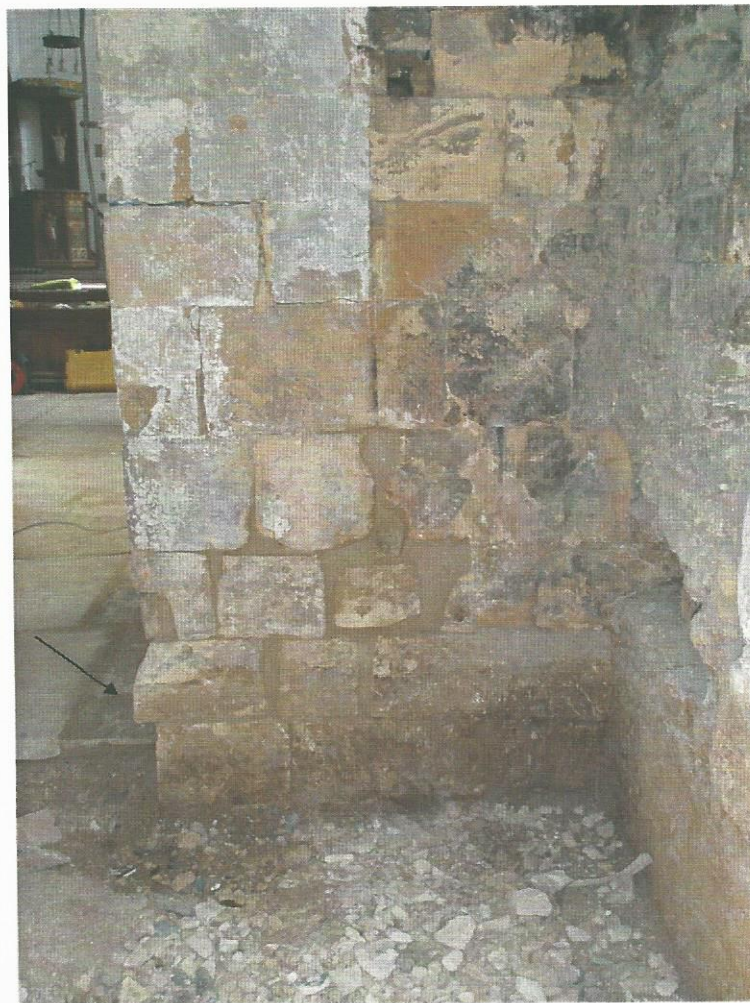


b

Pl. 70 Tympanum above the west door, engraving from Stonehouse 1839 a)west face b)east face



Pl. 71 Tower west door after rebuilding, looking east into the nave.



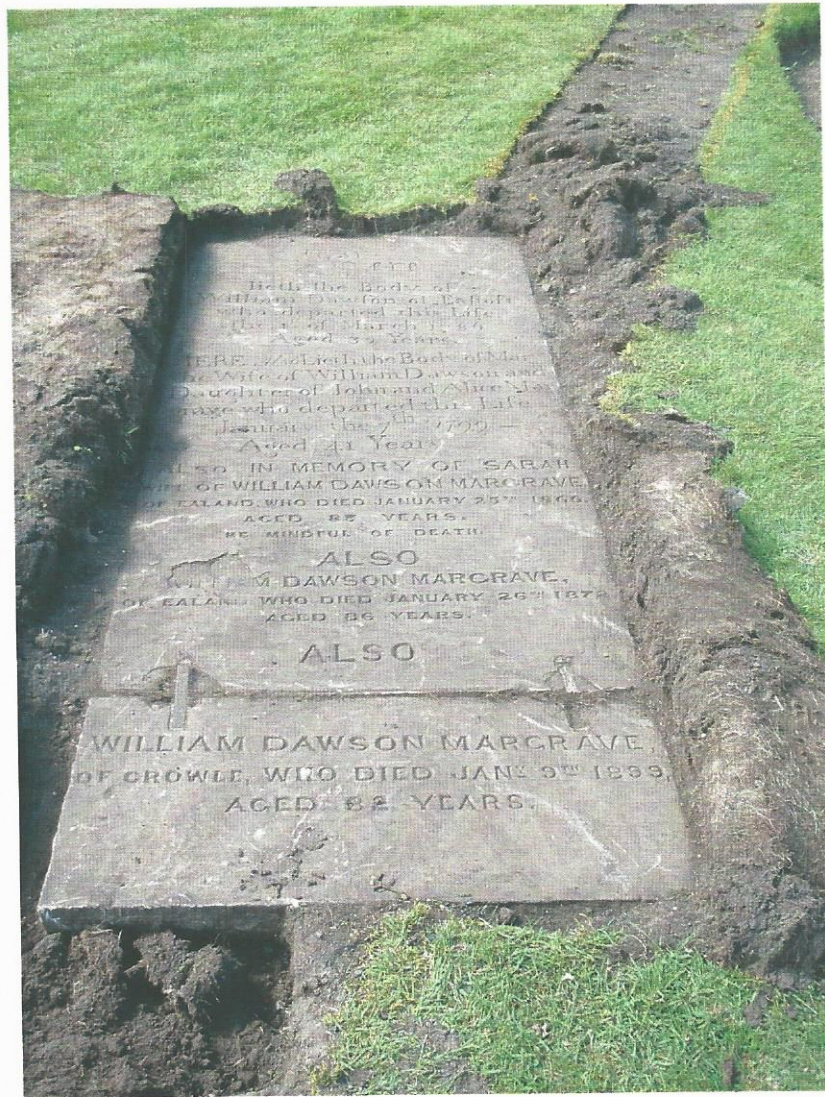
Pl. 72 Detail of south door jamb showing repositioned corner chamfer block, looking east.



Pl. 73 Service trench, looking south-east towards churchyard south wall.



Pl. 74 Churchyard, south boundary wall external face next to new manhole, looking north. Scales 1m and 0.50m



Pl. 75 Graveslab 603, looking west



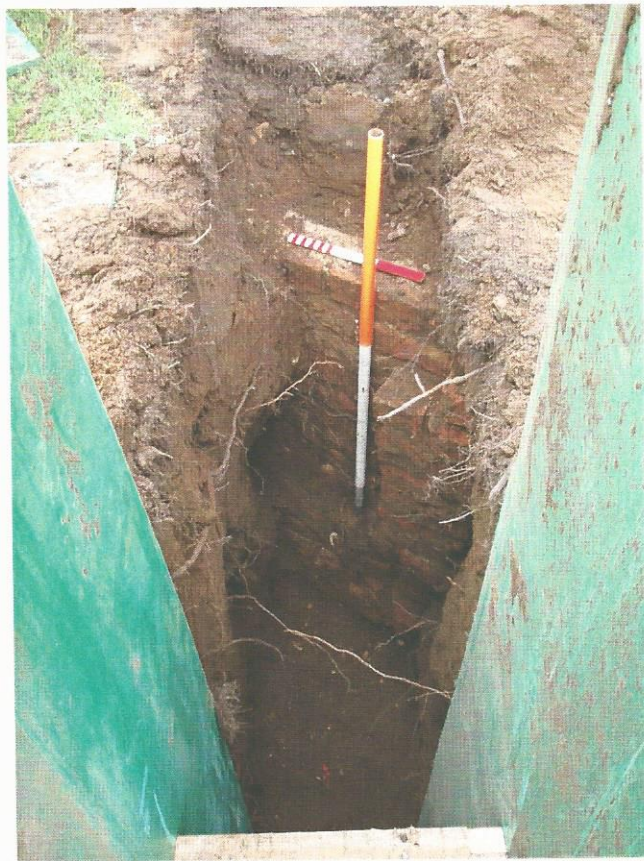
Pl.76 Detail showing brick vault beneath graveslab 603. Scale 0.50m



Pl.77 Corner of vault 605, looking south-east. Scales 0.50m and 0.30m



Pl.78 Close up showing corner of vault 605, looking south-east. Scales 0.50m and 0.30m



Pl. 79 Brick vault 606, looking north. Scales 1m and 0.30m



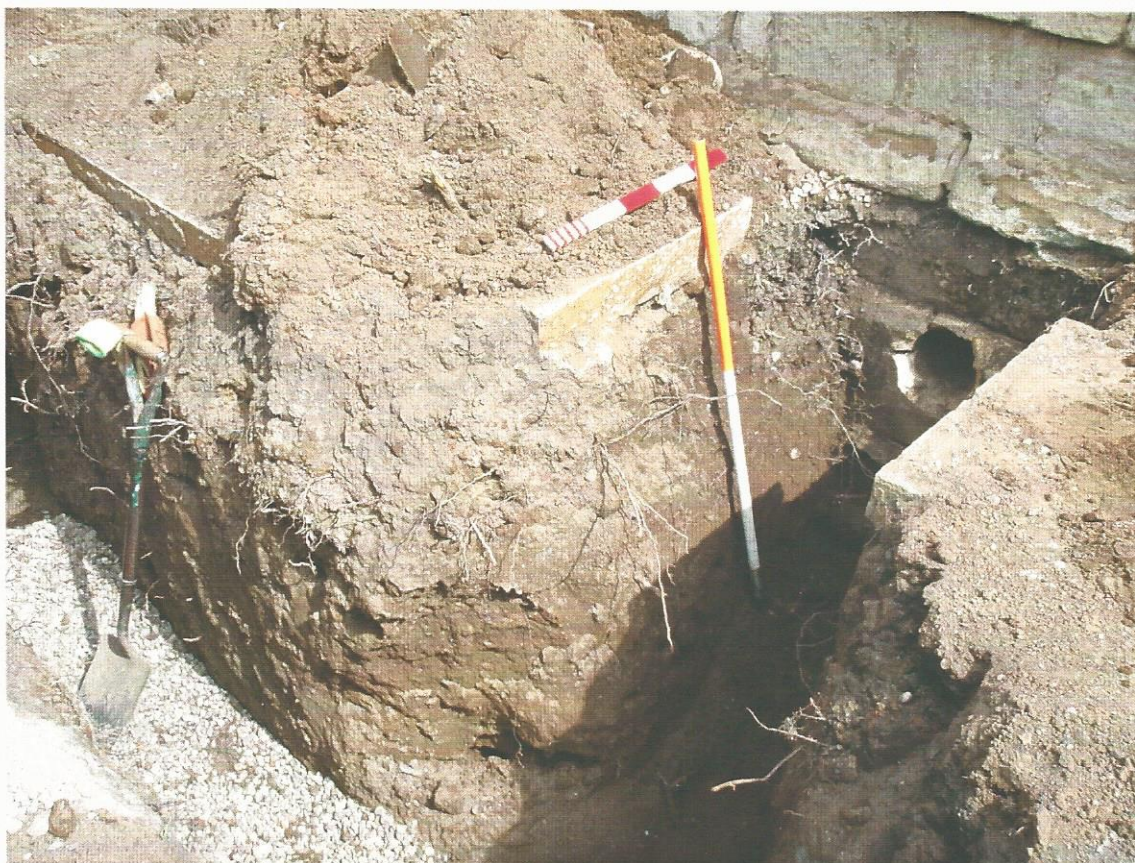
Pl. 80 Brick vault 606 after excavation of the trench around the west side, looking north



Pl. 81. Fragments of graveslab found near tower. Scales 0.50m and 0.30m



Pl. 82. Service trench on west side of tower, looking north



Pl. 83 Pipe trench at junction with tower west wall, looking north-east. Scales 1m and 0.50m



Pl. 84 Hole for service pipes in tower west wall. Scales 1m and 0.50m